

# A Picture Guide to Common Inhalant Allergens

## GRASSES

BAHIA GRASS g17



Time of Pollination  
Spring - Summer - Fall

BERMUDA GRASS g2



Time of Pollination  
Spring - Summer - Fall

JOHNSON GRASS g10



Time of Pollination  
Spring - Summer; Late Winter in extreme South

PERENNIAL RYE GRASS g5



Time of Pollination  
Spring - Summer - Fall

TIMOTHY GRASS g6



Time of Pollination  
Summer

## WEEDS

COCKLEBUR w13



Time of Pollination  
Summer - Fall

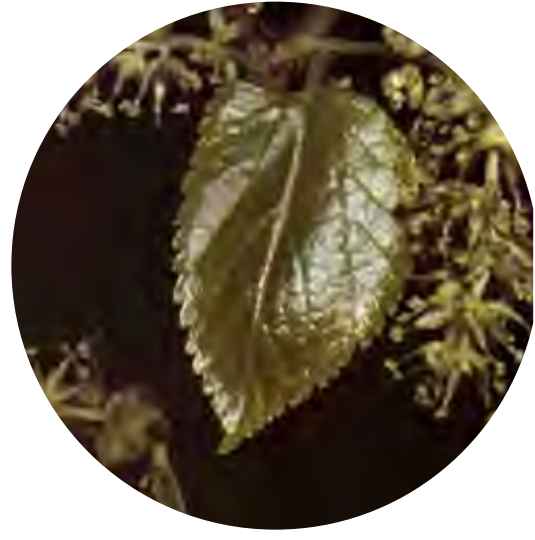
COMMON RAGWEED w1



Time of Pollination  
Late Summer - Fall

## WEEDS

MUGWORT w6



Time of Pollination  
Late Summer - Fall

NETTLE w20



Time of Pollination  
Summer - Fall

PLANTAIN w9



Time of Pollination  
Spring - Fall

ROUGH PIGWEED w14



Time of Pollination  
Late Winter - Summer

RUSSIAN THISTLE w11



Time of Pollination  
Late Summer - Fall

SHEEP SORREL w18



Time of Pollination  
Fall

WORMWOOD w5



Time of Pollination  
Summer

## TREES

ACACIA t19



Time of Pollination  
Late Winter - Early Spring

ALDER t2



Time of Pollination  
Early Spring

AUSTRALIAN PINE t73



Time of Pollination  
Late Winter - Spring

BAYBERRY t56



Time of Pollination  
Spring

BIRCH t3



Time of Pollination  
Early Spring  
(occasionally pollinates again in Late Summer/Early Fall)

COTTONWOOD t14



Time of Pollination  
Winter - Spring - Summer

ELM t8



Time of Pollination  
Late Winter - Early Spring

## TREES

EUCALYPTUS t18



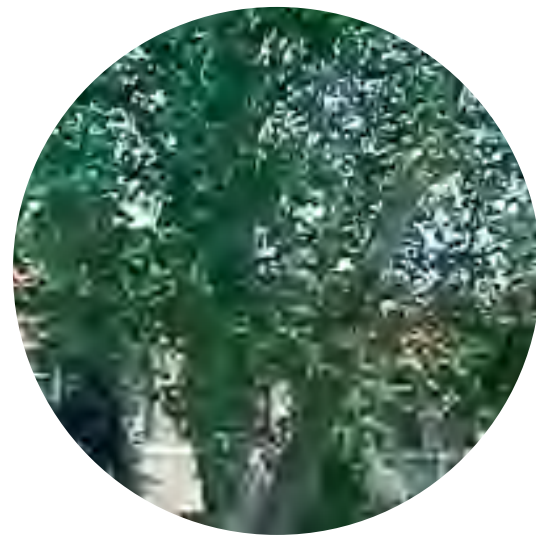
Time of Pollination  
Year Round

MAPLE t1



Time of Pollination  
Early Spring

MAPLE LEAF SYCAMORE t11



Time of Pollination  
Early Spring

MESQUITE TREE t20



Time of Pollination  
Spring - Summer

MOUNTAIN CEDAR t6



Time of Pollination  
Winter - Spring

MULBERRY t70



Time of Pollination  
Spring

OAK t7



Time of Pollination  
Spring

## TREES

OLIVE t9



Time of Pollination  
Spring

QUEEN PALM t72



Time of Pollination  
Summer - Early Winter

WALNUT t10



Time of Pollination  
Late Spring - Early Summer

WHITE ASH t15



Time of Pollination  
Spring

## INDOOR ALLERGENS (year round)

CAT DANDER e1



COCKROACH i6



DOG DANDER e5



## INDOOR ALLERGENS (year round)

MOUSE



- Mouse epithelium e71
- Mouse urine e72

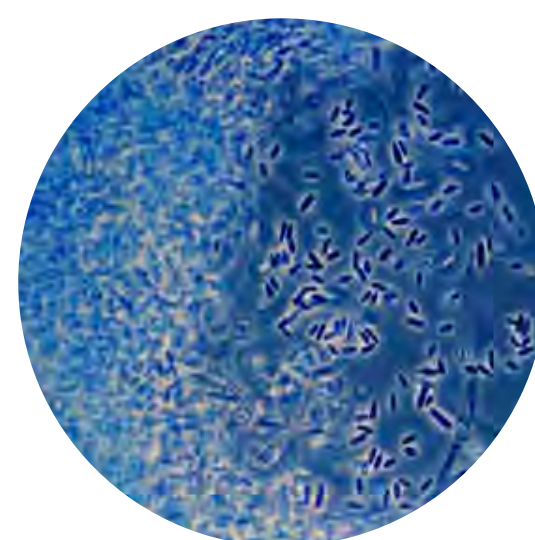
DUST MITES



- *D. farinae* d2
- *D. pteronyssinus* d1

## INDOOR/OUTDOOR ALLERGENS (year round)

MOLDS



- *A. alternata* m6
- *A. fumigatus* m3
- *C. herbarum* m2
- *M. racemosus* m4
- *P. notatum* m1

**90%** of people suffering with seasonal allergies are sensitized to **multiple allergens**.<sup>1</sup>

1. Ciprandi G, Alesina R, Ariano R, et al. Characteristics of patients with allergic polysensitization: the pollsmall study. *Eur Ann Allergy Clin Immunol.* 40(3); 2008:77-83.